

MENTAL HEALTH: A COMMUNITY CHALLENGE

WATERLOO REGION CHINESE
COMMUNITY ASSOCIATION

AUGUST 10, 2017

Acting Superintendent Daryl Goetz

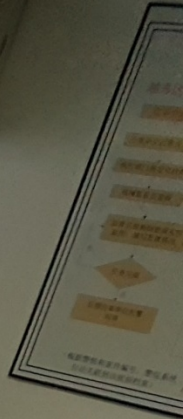
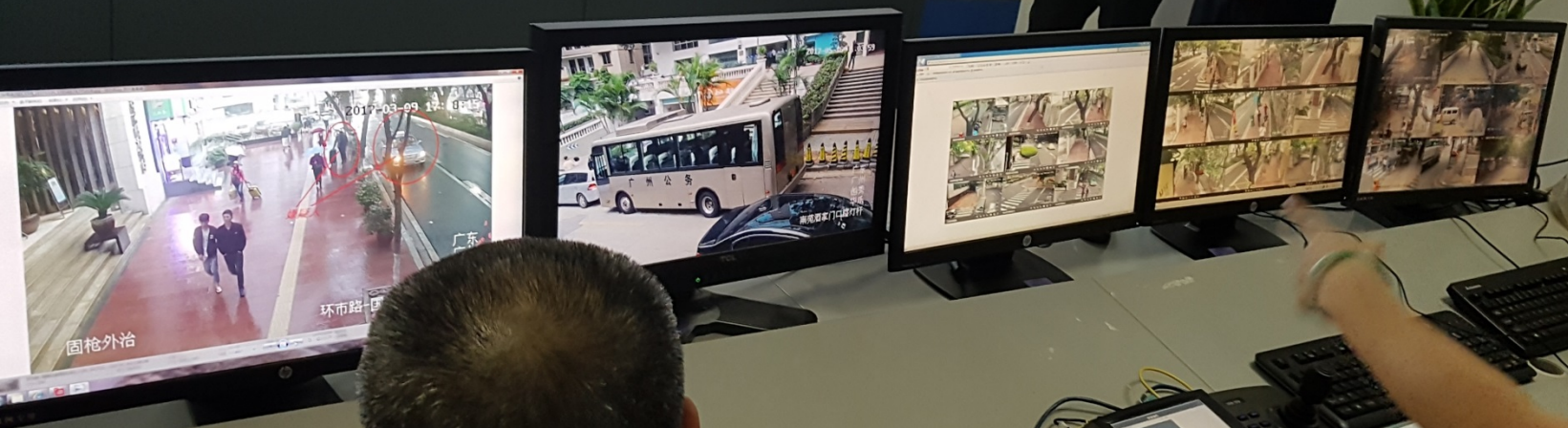


1. CHINA LEARNING EXPERIENCE
1. BRIEF OVERVIEW OF GEOGRAPHIC AREA
2. ONTARIO MENTAL HEALTH ACT
3. STATISTICS IN NORTH DIVISION
4. QUESTIONS?

欢迎香港警务处警察学院
国际警务发展课程访问团莅临我局

Warm welcome to the IEDP delegation team
from Hongkong Police College
for visiting Guangzhou Municipal P88







17:46:06
广东省公安厅指挥中心
指挥中心



序号	姓名	性别	年龄	职业	住址
1	张三	男	35	警察	广州市天河区
2	李四	女	28	文员	广州市白云区
3	王五	男	42	司机	广州市番禺区
4	赵六	女	31	教师	广州市海珠区
5	孙七	男	25	学生	广州市荔湾区

广州公安联动指挥平台
2017-06-15 17:46:06
总指挥 020-81234567
分指挥 020-81234567
值班员 020-81234567



This monitor displays a grid of various icons and small charts, likely representing different modules or services available within the command center system.

广东省公安厅指挥中心
指挥中心

指挥中心

指挥中心

指挥中心

指挥中心

指挥中心

指挥中心

指挥中心

指挥中心

指挥中心

指挥中心

指挥中心

指挥中心

指挥中心

指挥中心

指挥中心

指挥中心

指挥中心

指挥中心

指挥中心

指挥中心

指挥中心

指挥中心

指挥中心

指挥中心

指挥中心

指挥中心

指挥中心

指挥中心

指挥中心

指挥中心

指挥中心

指挥中心

指挥中心

指挥中心

指挥中心

指挥中心

指挥中心

指挥中心

指挥中心

指挥中心

指挥中心

指挥中心

指挥中心

指挥中心

指挥中心

指挥中心

指挥中心

指挥中心

指挥中心

指挥中心

指挥中心

指挥中心

指挥中心

指挥中心

指挥中心

指挥中心

指挥中心

指挥中心

指挥中心

指挥中心

指挥中心

指挥中心

视频督导

网络巡查

舆情应对

网络巡查

网络巡查

网络巡查

网络巡查

网络巡查

网络巡查

网络巡查

网络巡查

网络巡查

网络巡查

网络巡查

网络巡查

网络巡查

网络巡查

网络巡查

网络巡查

网络巡查

网络巡查

网络巡查

网络巡查

网络巡查

网络巡查

网络巡查

网络巡查

网络巡查

网络巡查

网络巡查

网络巡查

网络巡查

网络巡查

网络巡查

网络巡查

网络巡查

网络巡查

网络巡查

网络巡查

网络巡查

网络巡查

网络巡查

网络巡查

网络巡查

网络巡查

网络巡查

网络巡查



WATERLOO REGION: 2016- 583,500



North Division: City of Waterloo, Wellesley, Woolwich and Wilmot Townships and a portion of Kitchener. Two Universities.



MENTAL HEALTH ACT

Police can APPREHEND when someone is:

- Acting in a disorderly manner and threatens or attempts to cause self bodily harm or
- Has behaved or behaving violently towards another person or causing someone to fear bodily harm
- Incompetence to care for themselves that will result in serious bodily harm to self or others



What Do The Police Do Once Apprehended??

- Take them to the hospital for assessment and treatment
- the Doctor assesses if they are taken into care
....not the police
- EVERY** apprehension results in a police report that is reviewed by a supervisor.

DO THE POLICE ATTEND ALONE?

-A1: Sometimes and with EMS (Ambulance)

-A2: New...Special Mobile Crisis Teams.
Partnership with CMHA and LHIN

But: our goal is to always de-escalate those
situations with persons in distress



RESPONDING TO CRISIS: POLICE PARTNER WITH MENTAL HEALTH NURSES

NEWS OCT 12, 2013 BY BILL JACKSON CAMBRIDGE TIMES

WATERLOO REGION – A new partnership between the Waterloo Regional Police Service (WRPS) and local mental health professionals is helping provide better response to members of our community at the scene of a crisis, precisely when and where they need it the most.

Last October, funding was provided by the Local Health Integration Network (LHIN) to develop and enhance mobile services for people in emotional distress.

Psychiatric nurses were hired by the local branch of the Canadian Mental Health Association (CMHA) to respond to mental health crisis police calls for services, 12-hours per day, seven days a week.

Specialized Crisis Team (SCT) nurses have been provided with police radios and training and are now available to respond to such calls, from 11 a.m. until 11 p.m.



OTHER OPTIONS

- Community Resource Outreach
- Connectivity Table wrap around approach



Missing Persons: Often exhibit Mental Health issues



STATISTICS

- End of July 2017 in North -10 suicides
 - 423 reported suicide attempts
 - 80 Apprehensions with Order
 - 90 Apprehensions without order
-

- 45 voluntarily attend hospital
- 213 either left prior to arrival or insufficient grounds to intervene



QUESTIONS?





WATERLOO REGIONAL
POLICE